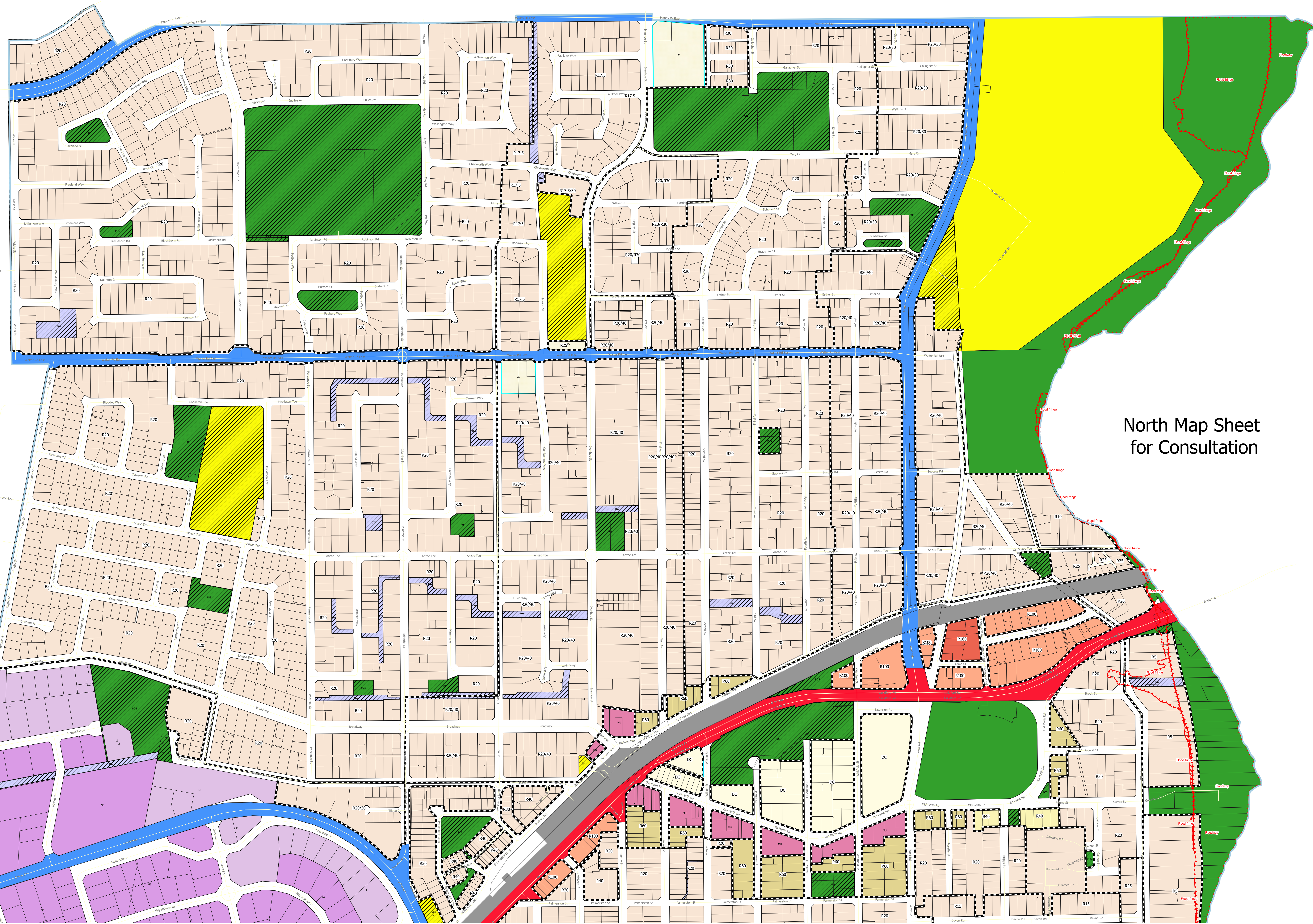
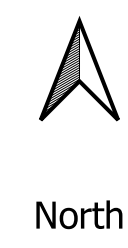


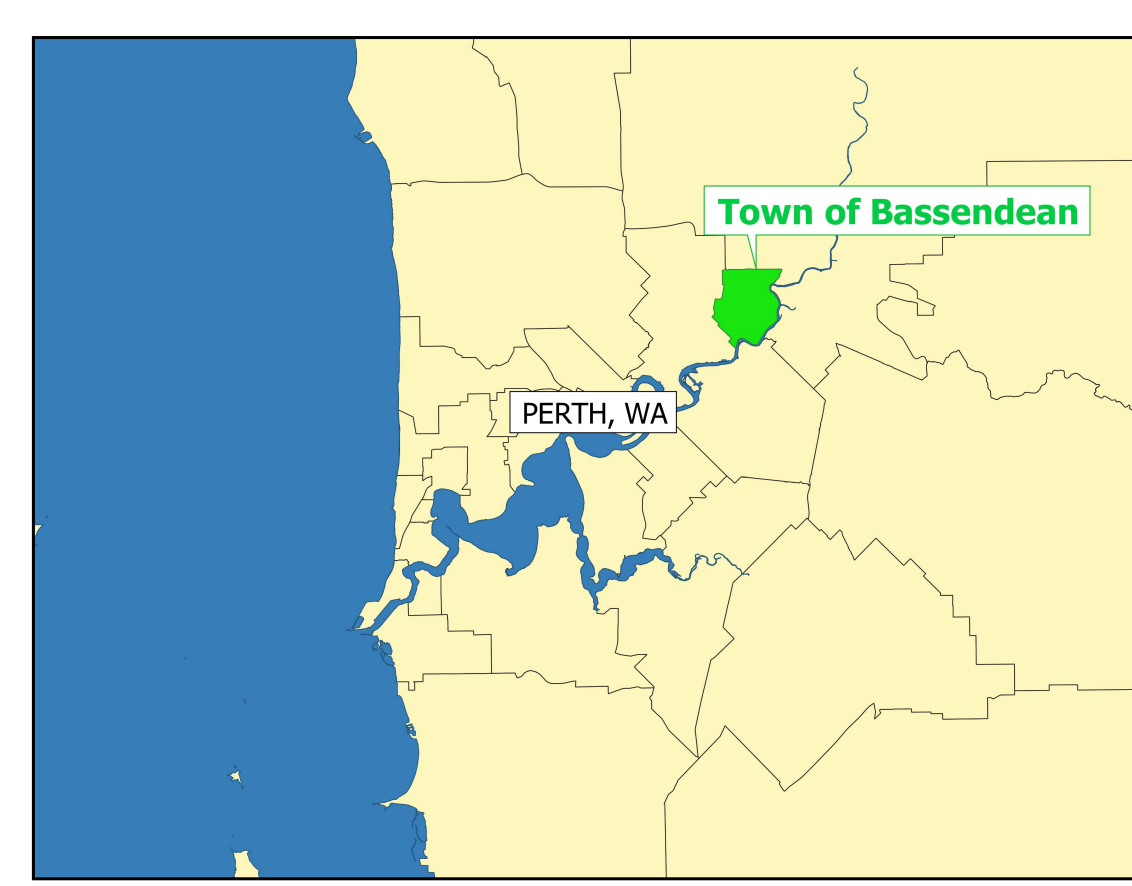
Town of Bassendean Local Planning Scheme 11

Last Updated Apr 6, 2023

- Legend - Local Planning Scheme 11**
- Town of Bassendean Boundary
 - Special Control Areas SCA1 Swan River Flood and Fringe
 - Local Planning Scheme Road Line and Labels
 - Cadastre
 - District Centre Roads
 - R40
 - R60
 - R100
 - R160
 - Mixed Use
 - District Centre
 - Local Planning Scheme 11 Zoning
 - LOCAL CENTRE
 - GENERAL INDUSTRY
 - LIGHT INDUSTRY
 - LOCAL RESERVE - DRAINAGE/WATERWAYS
 - LOCAL RESERVE - RAILWAYS
 - PUBLIC OPEN SPACE
 - PUBLIC PURPOSES
 - CIVIC AND COMMUNITY
 - RESIDENTIAL
 - ADDITIONAL USE
 - MIXED USE
 - Metropolitan Regional Scheme
 - Other regional roads
 - Parks and recreation
 - Primary regional roads
 - Public purposes - high school
 - Public purposes - hospital
 - Public purposes - State Energy Commission
 - Railways
 - Waterways



North Map Sheet
for Consultation



Town of Bassendean
48 Old Perth Road, Bassendean WA 6054
PO Box 87, Bassendean WA 6934
Phone: (08) 9377 8000
Fax: (08) 92794257
Email: Email@bassendean.wa.gov.au
<https://www.bassendean.wa.gov.au/>

Disclaimer: While all reasonable care has been taken to ensure the information contained on this map is up to date and accurate, no warranty is given that the information contained on this map is free from error or omission. Any reliance placed on such information shall be at the sole risk of the user. Please verify the accuracy of the information prior to using it. Copyright Town of Bassendean. Geographical Information Systems (GIS): "Geology rocks but Geography is where it's at!"