

# Ashfield Parade concept plan

prepared by **syrix** environmental pl



### revegetation strategy

Ashfield Parade

- deep rooted species
- shallow rooted species with high water usage
- rushes + sedges

groundwater seepage

high water mark

low water mark

### legend

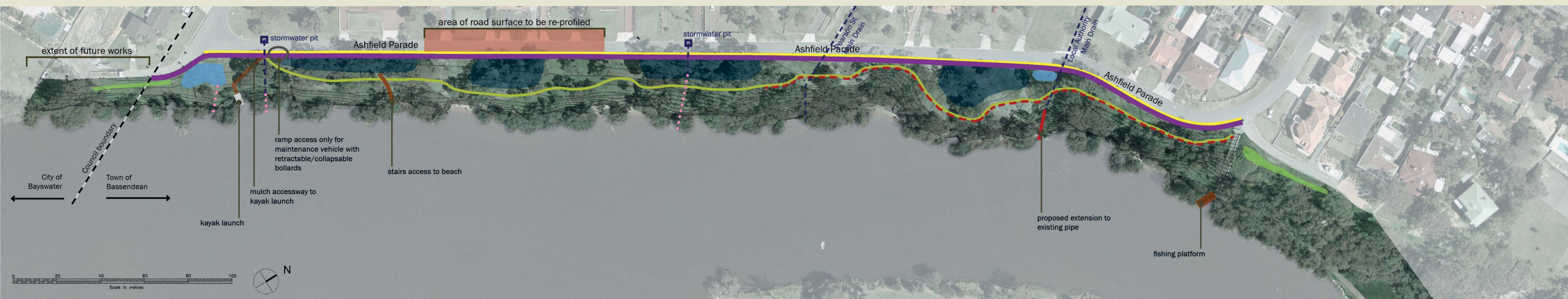
#### revegetation

- opportunistic extension of vegetation into parkland [dry land] areas, mix of shallow rooted and deep rooted species, low growing species [ $<600\text{mm}$  high] to be planted not to restrict views
- establishment of rushes + sedges for stabilisation and prevention of further erosion; node planting and strip planting as required; species eg. *Juncus kraussii*, *Schoenoplectus validus*
- regrading of foreshore; establishment of herbs, shrubs and trees endemic to the area; planting to intercept surface flow from unpiped catchment
- shallow rooted species with high water usage such as *Baumea vaginalis* [perennial rush growing up to 1.5m in height] in replacement of *Rubus* and *Schinus* spp.
- planting of deep rooted species to stabilise embankment above escarpment

### note

- weed control required along Ashfield Parade, implementation required over a period of 3 years
- full species list for rehabilitation to be provided
- dead, declining and unsuitable plant species such as Chinese Pepper to be removed

## environmental restoration



### indicative access + usage diagram

Ashfield Parade

pathway

bench

temporary fence

buffer planting

rushes + sedges

groundwater seepage

high water mark

low water mark

### legend

#### amenities

- nominated areas for location of urban furniture such as seating + bins
- 1.8m wide concrete pathway adjoining kerb edge
- delineation between turf and restoration areas
- 1.2m high chain mesh temporary fence to be kept until completion of vegetation establishment

### indicative stormwater pipe extension

Ashfield Parade

existing pipe

join to pipework

proposed extension to pipe with bubble-up pit

groundwater seepage

high water mark

low water mark

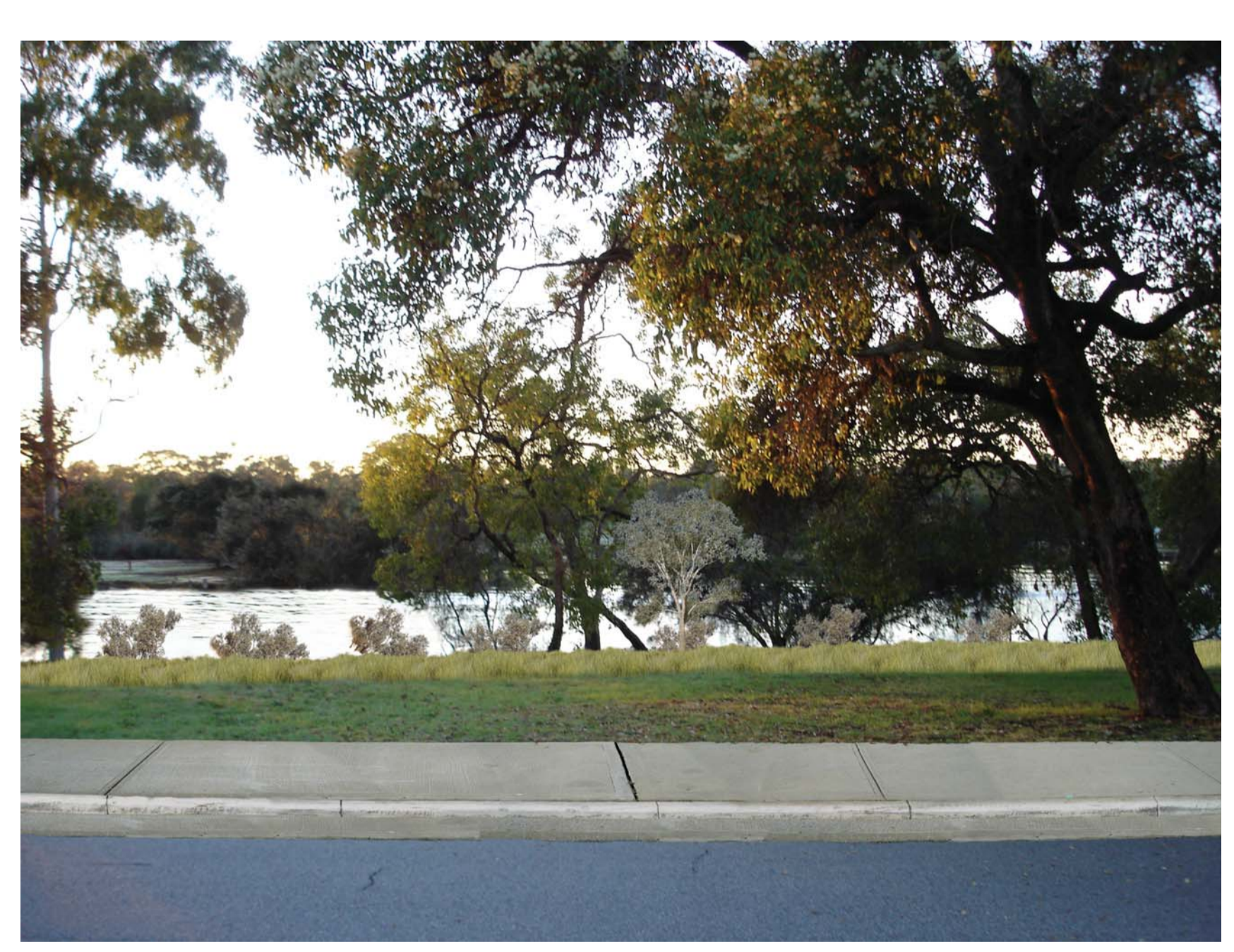
### legend

#### drainage

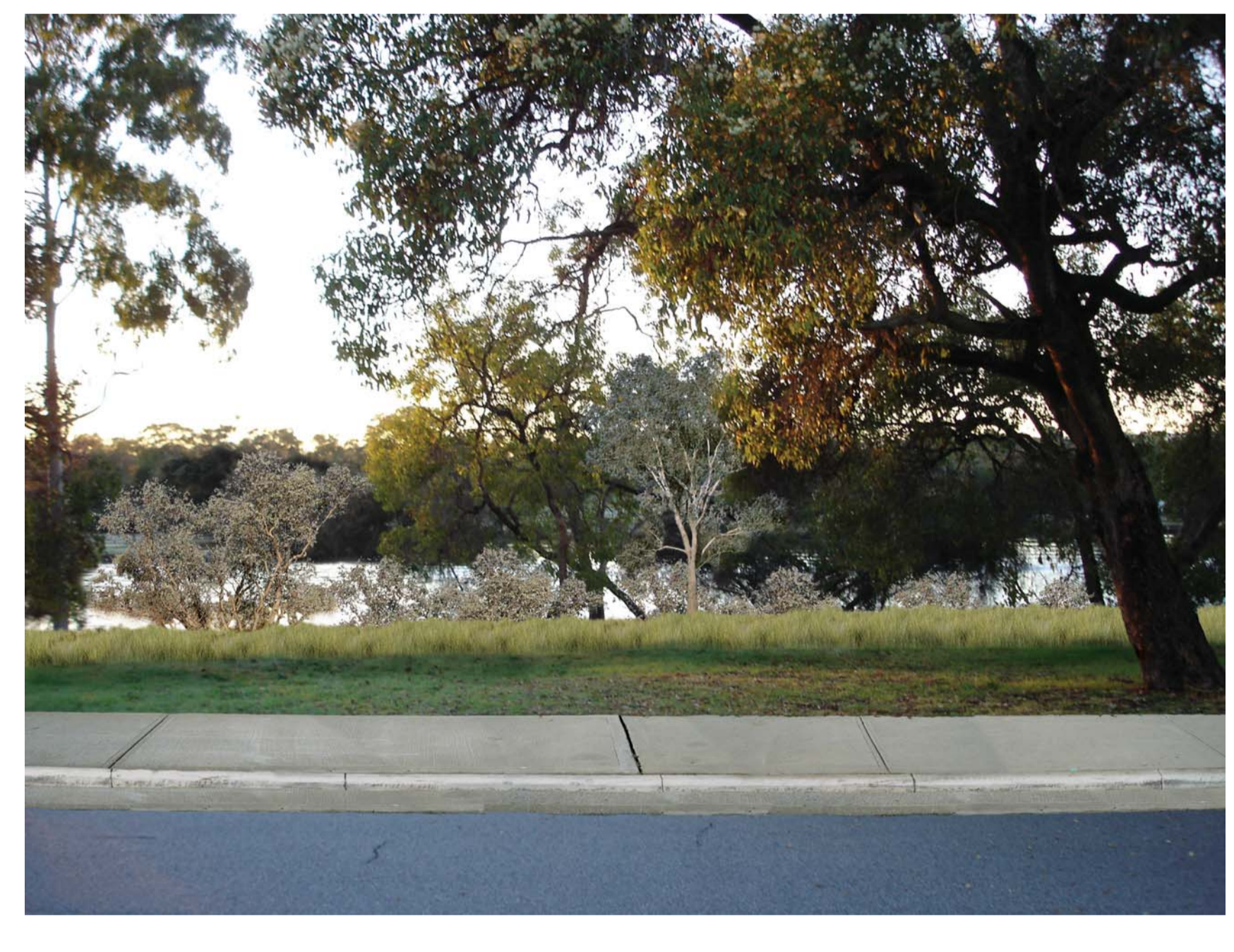
- insitu barrier kerb 200mm high
- existing pipework
- proposed rock chutes
- evapotranspiration swale
- vegetated buffer

## civil works

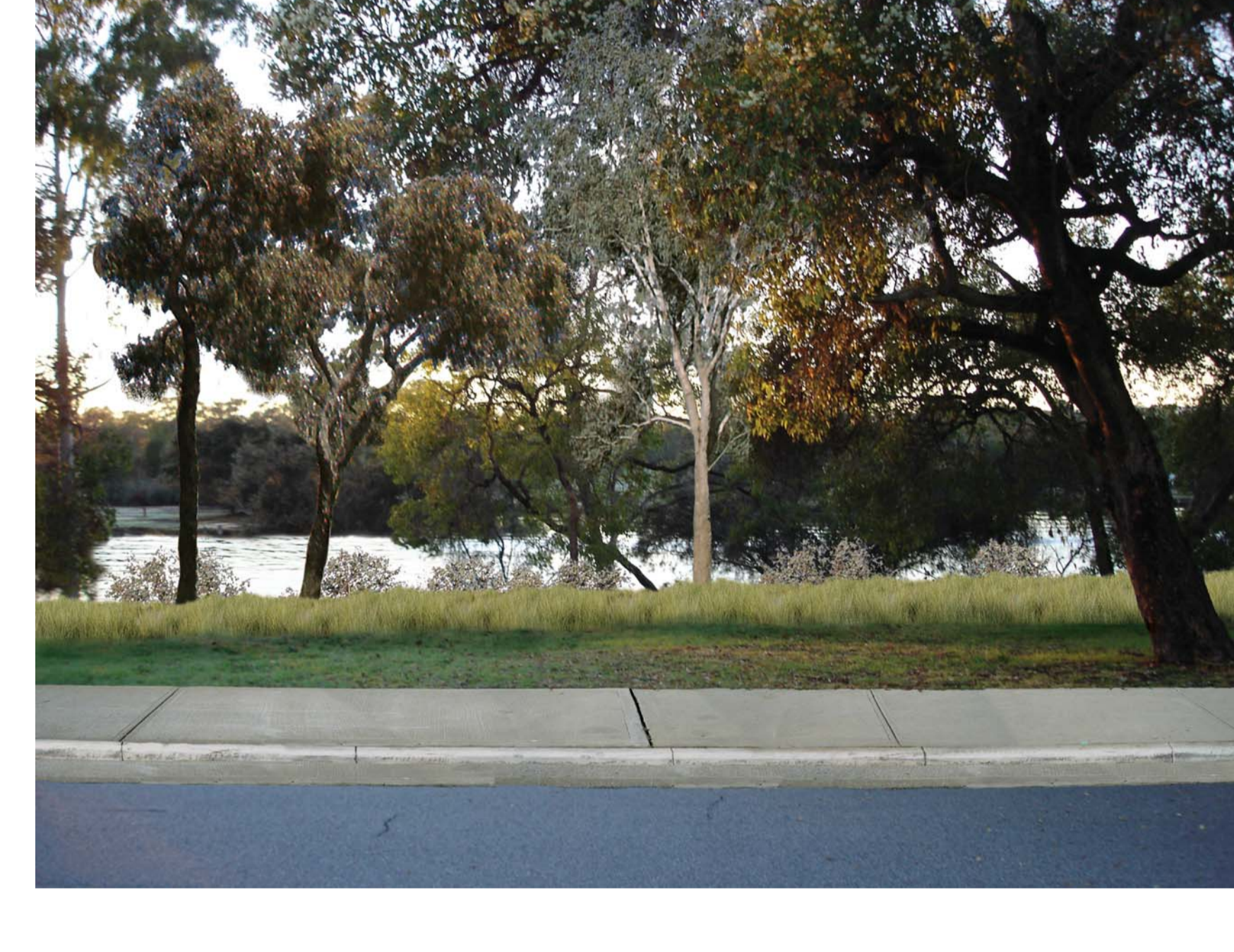
## plants projected growth sequence



year 1



year 3



year 5

## typical cross-section view at year 5

