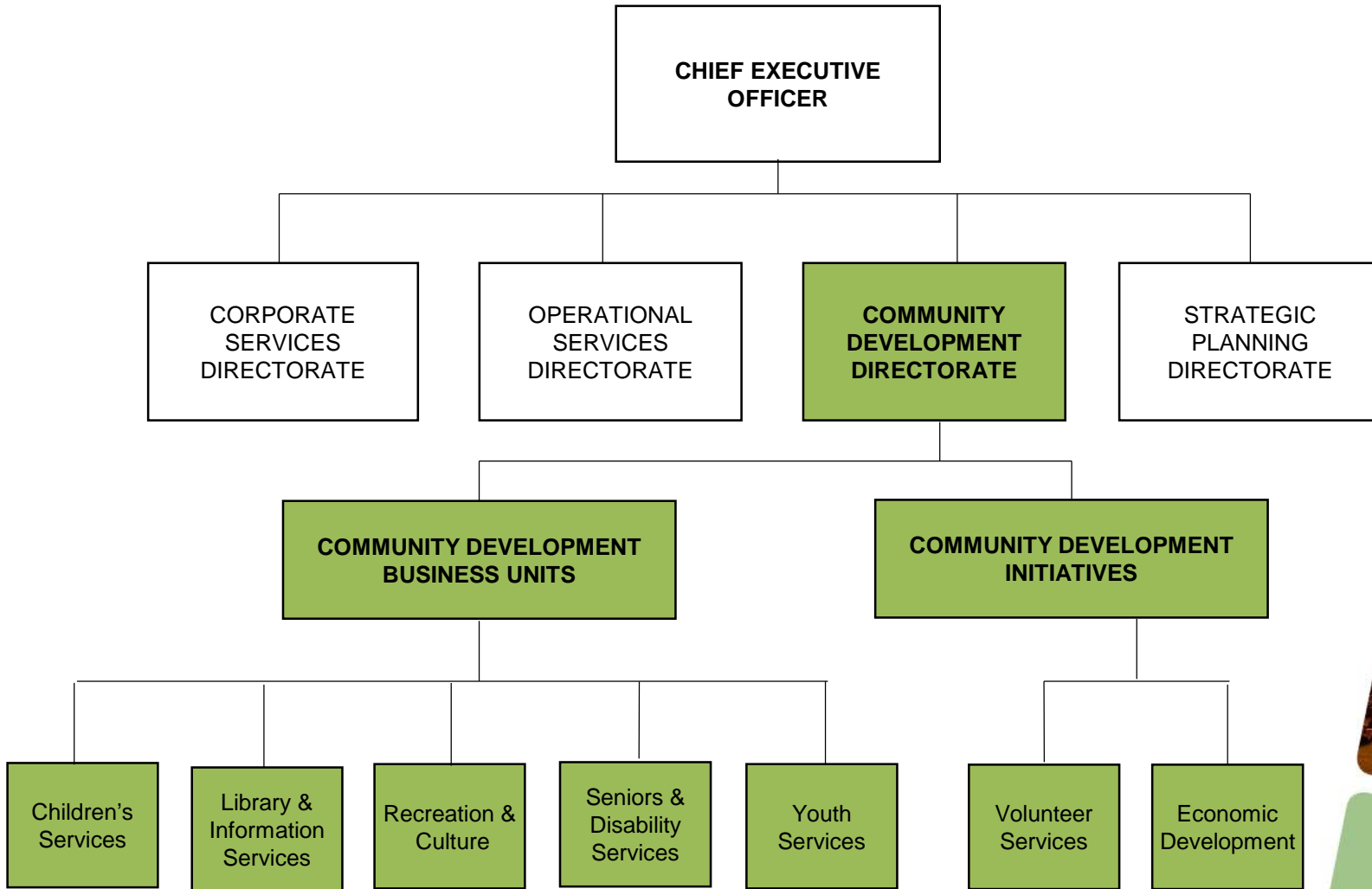




TOWN OF  
**BASSENDEAN**  
*Home by the Swan*

# Community Development Induction





# Community Development Initiatives

- Disability Access and Inclusion Plan
- You're Welcome Initiative/Bassendean Inclusive Community
- Ashfield Community Action Network (CAN) to implement the Ashfield Community Action Plan
- Local Emergency Management Plan
- Reconciliation Action Plan and Aboriginal Consultation
- Seniors Census and Seniors Network Forum
- Child Friendly Community Initiatives
- Bassendean Men's Shed
- Economic Development
- Volunteering for the Town and in the Community



# Children's Services

## Mission:

1. To advocate for the rights of children and families to access quality early childhood educational programmes supporting secure, happy, active citizens for today and tomorrow.
2. To liaise with the local community and to ensure the programmes on offer are reflective of the community requirements.



TOWN OF  
**BASSENDAN**  
Home by the Swan

# Children's Services



Sally Griffiths

Wind in the Willows  
Bassendean

Wind in the Willows  
Ashfield

Manager Children's Services

Assistant Manager

Senior Educator / Early  
Childhood Teacher

Senior Educator /  
Supervising Officer

Senior Educators x 20 and Educators x 5

Food Preparers x 2 and Cleaner (WITW & Ashfield) x 2



TOWN OF  
**BASSENDEAN**  
Home by the Swan

# Children's Services

## Range of services and target population

Long day care 0-6 years of age with

- Wind in the Willows Bassendean (0-3yr olds)
- Wind in the Willows Ashfield (3-5yr olds)

- Investigate and plan for the requirements of the community with regards to social needs and educational needs, including playgroups, parenting programmes and early childhood educational settings.
- Ensure the ever changing legislative requirements and needs of the community are facilitated and reflected in service delivery to promote continuous quality improvement.
- As a Not-for-Profit community based service, ensure transparency of financial operations, with consideration for affordability for families and sustainability of the business model.



# Recreation & Cultural Services

## Mission

To work with our community to enhance our Town through recreational and creative opportunities.

## Principal Lines of Business

Sport & Recreation

Arts & Culture

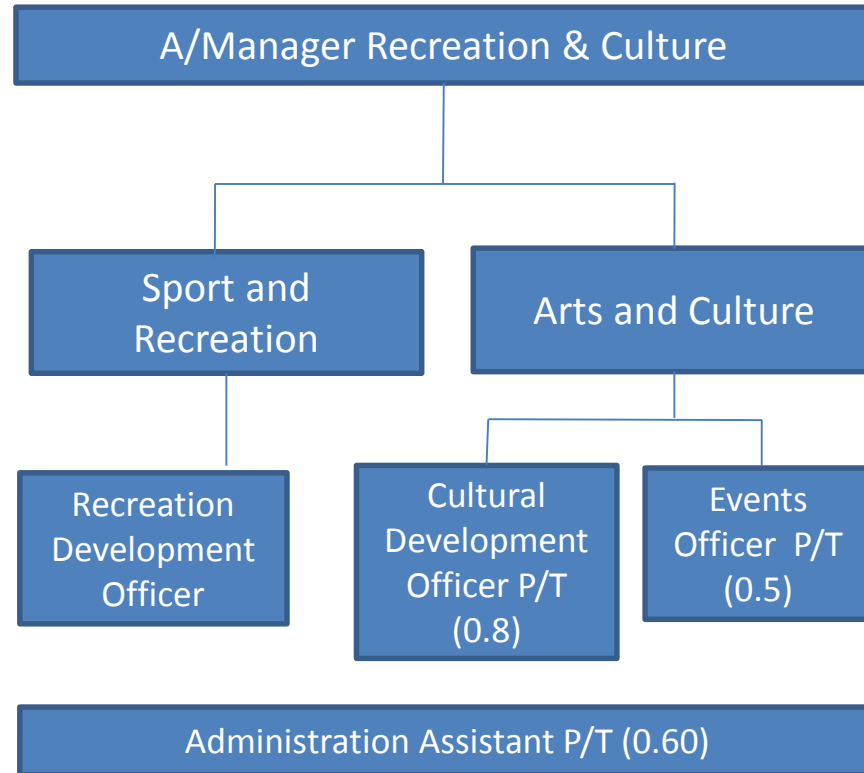


TOWN OF  
**BASSENDEAN**  
Home by the Swan



Gabriella Filippi

# Recreation & Culture





# Recreation & Cultural Services

## Outcomes – Sport and Recreation

- Management of community access to (16) ovals, reserves and community facilities for approximately 50,000 people each year
- Provision of a Club Development program to assist with the sustainability of (20) local clubs via: training, educational seminars and ongoing communication via e-Newsletters
- Master Planning Projects



# Recreation & Cultural Services

## Outcomes – Sport and Recreation (cont)

- Provision of Recreation and Engagement (RElax) Program for approx 1,000 people each year
- Physical Activity Promotion, including via walking and cycling programs
- Management of Leases & Licences
- Play structures development



# Recreation & Cultural Services

## Outcomes – Sport and Recreation (cont)

- Provision of Sports Achievement Awards for local sporting achievers
- Town of Bassendean representation on a LG Regional Recreation Advisory Group (NMRRAG).



# Recreation & Cultural Services

## Outcomes – Arts & Culture

- Implementation of the Town's Cultural Plan
- Provision of Public Events for approx. 40,000 people each year including Australia Day, NAIDOC, Seniors Week, Bassendean Visual Art Awards and many more.
- Facilitation of cultural activities/ projects, for approx. 10,000 people each year
- Curation of the Town's Public Art Collection (over 100 items)



# Recreation & Cultural Services

## Outcomes – Arts & Culture (cont)

- Pensioner Guard Cottage/Museum
- Management of the Town's Community Events Sponsorship Program.
- Town of Bassendean representation on a regional cultural committee (Cultural Development Forum).
- Percent for Art Projects – Council and Commercial developments



# Volunteer Services



## Mission

To promote and support volunteering by providing resources to volunteers and community

## Vision

That each individual discovers the power they have to make a difference, in a community where everyone is included, recognised and supported, across a range of volunteer services.



# Volunteer Services

## Volunteers

- Referral to other community services and agencies
- Coordination and support for volunteers
- Volunteer management assistance for community based not for profit self-help groups/organizations
- Volunteering opportunities and work experience placements



Luke Wilson  
A/Community Development Officer/Volunteers



# Volunteer Services

## Community Transport

- Community transport throughout the metropolitan area with priority access for the financially disadvantaged for medical and specialist appointments, and spouses visiting partners confined to hospitals and aged care facilities.
- Community transport within Bassendean for the socially isolated and housebound for shopping, social activities, access for community groups and local medical appointments.





# Youth Services

## Vision

To enhance the quality of young people's lives as valued members of the community by ensuring that Council processes are inclusive of young people, and that young people have access to a range of quality facilities and support services which are responsive to their diverse needs, and ensures they are active participants in the Town of Bassendean community.



# Youth Services

## Current Programs

- **Drop In/Open Access** - Traditional youth engagement model based around informal engagement and recreation.
- **Case Management** - Formal assistance to local young people considered at 'high risk'
- **School Holiday Program** - Recreation Program targeting local aboriginal young people and their families
- **SHIELD Housing Program** (Secure Housing for Individuals Exploring Lifeskills Development) Externally supported medium term housing stock targeting homeless young people



# Youth Services

## Current Programs (cont)

- **RYDE Program** (Regional Youth Driver Education) - Community consortium leveraging technology to deliver supervised driving hours to disadvantaged learner drivers
- **YAC** (Youth Advisory Council) - Youth working group engaging in the provision of feedback to Council regarding issues affecting young people and the planning and delivery of youth events/projects
- **Keen on Halloween** - YAC initiative seeking to structure community participation in Halloween festivities



# Youth Services

## Current Programs (cont)

- **Gravit8** - Youth festival co-delivered with the Bassendean Youth Advisory Council. Held annually for the past 10 years
- **Urban Art projects** - Structured art opportunities for local youth street artists
- **NAIDOC Family Day Youth Zone** - Specific youth orientated marquee and entertainment
- **NEYON** (North East Youth Organisations Network) - Co-founder and Coordination Group member
- **Social Media** - Management of the official Town of Bassendean Facebook Page



# Library and Information Services

## Mission

To ensure the Bassendean community has access to quality public library and Information services in partnership with the State-wide Public Library Service.

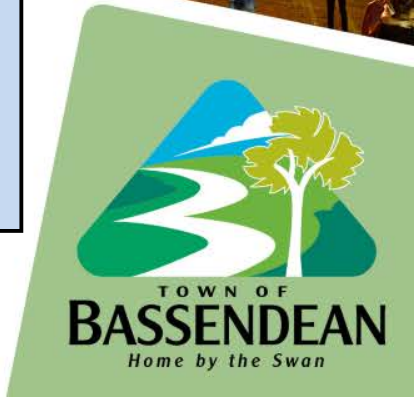
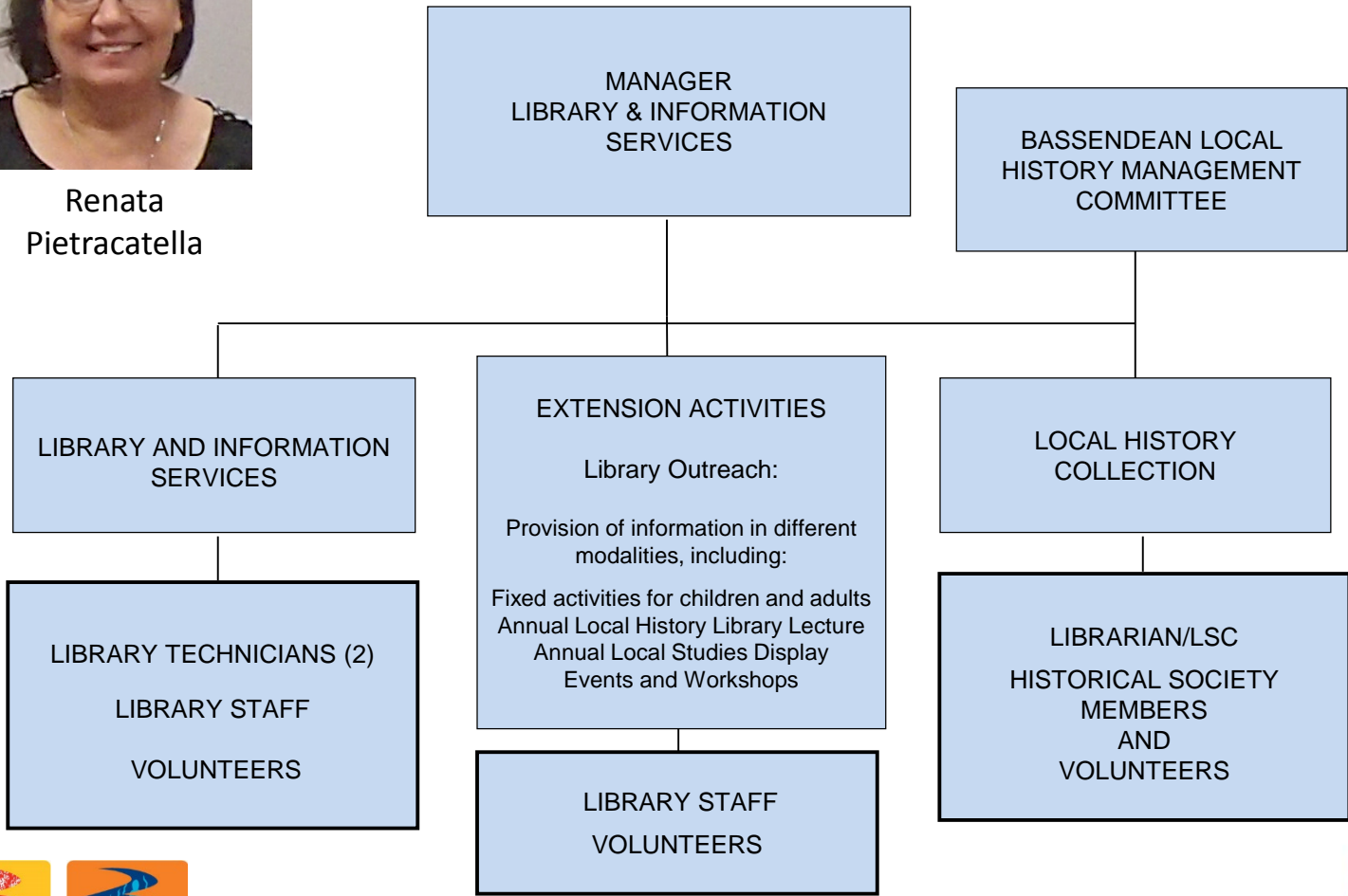
To provide high quality, customer driven library and information services that meet the needs of our community to enrich its quality of life.



# Library and Information Services



Renata  
Pietracatella



# Library and Information Services

## Services Delivered

- Provision of a free Public Library Service that is part of the State-wide Public Library Service
- 53 hours per week access to library facilities that offer welcoming, inclusive and accessible space for learning, education, research, leisure and cultural activities
- 24 hours electronic access to library services via My Account on the library's Website (renewals, reservations, requests)
- Access to over 40.000 items in various formats and languages that may be borrowed
- Access to eCollection (eAudio, eBooks, eMagazines) as part of the WA Public Libraries Digital Media Collection via Library Website
- Provision of Interlibrary loans service that enables access to State-wide collection
- Provision of Multi-language collection
- Provision of public access to the Internet, free WiFi and basic business services, such as scanning, faxing and printing. Staff assistance is available when required
- Provision of reference and information services, including community information
- Educate the community about the availability and nature of the Library Service
- Offer training to develop skills to access library's products and services



# Library and Information Services

## Services Delivered (continued)

- Facilitate access to adaptive technology and devices to provide equity of access to the collection by people with disabilities
- Provision of Local Studies where items about the history, development, society and culture of Bassendean are collected and preserved
- Provision of library programs that support and foster early literacy and Science, Technology, Engineering, Mathematics (STEM) concepts (Rhyme Time, Story Time, Lego Club, Code Club, Basso Kids Reading Program, school holidays activities)
- Provision of Extension services that offer educational, recreational and informational support to the Community Hub functions of the facility (Literary Salon, Craft Group, English as Second Language class, One-on-one Computer classes, support for the Writers Group and Book Clubs, display space for artists, artisans and crafters)
- Provision of outreach services that enable access to the Library collections- such as Housebound, bulk loans to aged care facilities, schools and pre-schools.





# Seniors & Disability Services

## VISION

A quality independent life for all.

## OUR MISSION

To support the community in living a quality of life, through the provision of responsive personalised care promoting independence and inclusion.

## VALUES

Our values are a demonstration of how we live our mission to support the community in living an independent inclusive quality life.

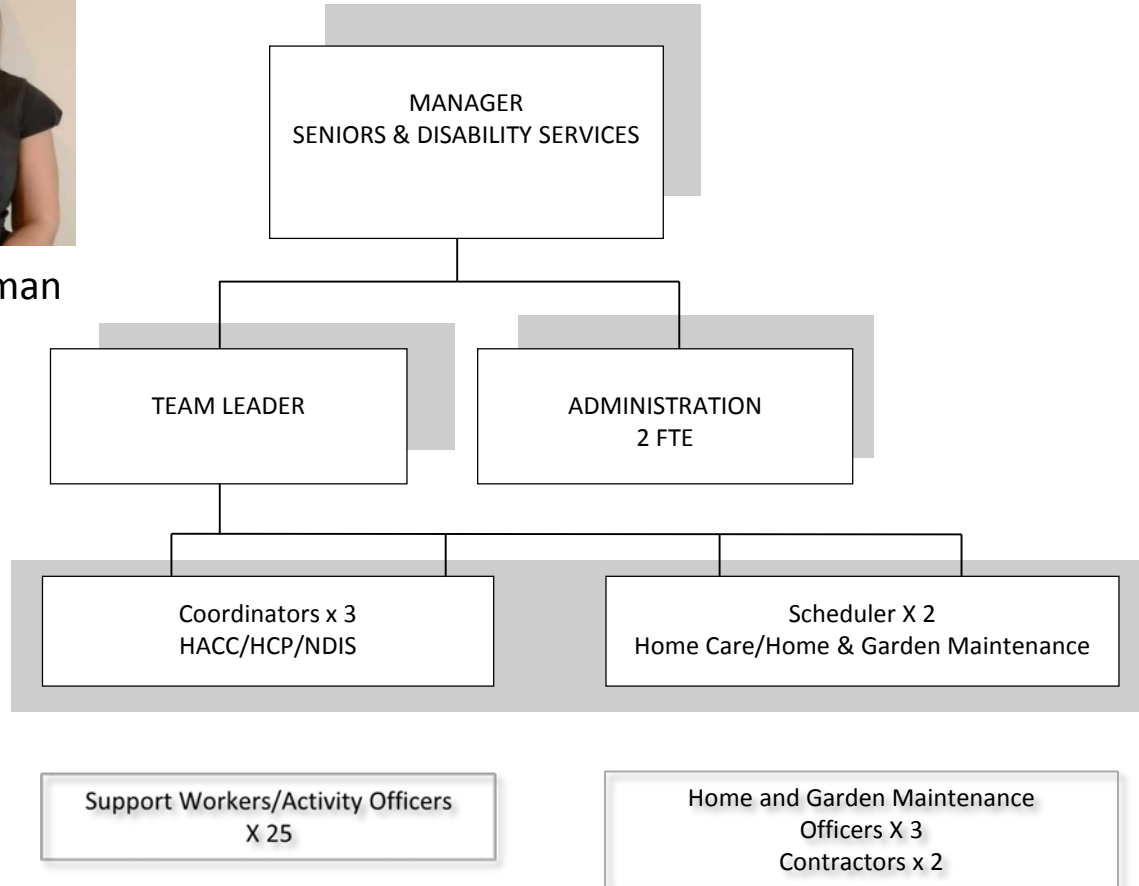
We support the independence and wellbeing of seniors, frail aged and people with disability.



# Seniors & Disability Services



Mona Soliman



# Seniors & Disability Services

Supporting older people and people with disability to live independently at home.

- Providing personalised support in the home and the community for over 400 individuals.
- Quality support provided through Home and Community Care (HACC), Home Care Packages, private services and State and Federal National Disability Insurance Scheme services.
- A niche home and garden maintenance service with specialist focus on sustainable water wise gardens.
- Supporting community connections and friendships through a vibrant social program for individuals and groups.
- Affordable independent living at the Hyde Retirement Village.



# Seniors & Disability Services

## Services:

Meals

Respite

Transport

Medication

Domestic assistance

Personal and self-care

Home/garden maintenance

Group or individual activities

Independent retirement living

At the Centre, or out in the community, fun.



# Seniors & Disability Services

Covering:

Bassendean - Ashfield - Eden Hill

Maylands - Bayswater - Morley

Embleton - Kiara - Lockridge

Guildford - Midland

Woodbridge - Beechboro

Caversham



# Economic Development

## *Core Objectives*

- Facilitate local business retention and growth
- Build economic capacity
- Establish organisation wide commitment to economic development.



William Barry  
Senior Economic Development Officer



# Economic Development

## RESEARCH, COMMUNICATION AND PUBLICITY

- Dedicated web site – [www.bassendeanmeansbusiness.com.au](http://www.bassendeanmeansbusiness.com.au)
- Advise on trends – digital technology, ABR data.
- Promote local business initiatives
- Representation on committees and boards: Cyril Jackson Senior Campus, Economic Development Australia, Central Eastern Business Association, Forum Advocating Cultural and Eco Tourism (FACET)

## TRAINING AND DEVELOPMENT

- Collaboration with and promotion of CCI, CEBA, EMRC, AUSINDUSTRY

## PROGRAMS AND PROJECTS

- Old Perth Road Markets
- Re-new Old Perth Road and Localism
- Local Economic Overview Strategy



TOWN OF  
**BASSENDEAN**  
Home by the Swan

# Corporate Business Plan Projects

Measures of our Success 2017/18

Strategic Priority 1. Social

OBJECTIVE: 1.1 BUILD A SENSE OF PLACE AND BELONGING

Projects	
Facilitate community action driven neighbourhood activation plans	<ul style="list-style-type: none"><li>• This will be incorporated into the Marketing Strategy as a community engagement process.</li></ul>
Develop revised Culture Plan	<ul style="list-style-type: none"><li>• The consultant has commenced work on the reviewing the Town's Cultural Plan.</li><li>• A project reference group has been set up and discussions have occurred with various key stakeholders.</li><li>• One project reference group meeting has been held with a proposed community consultation program being discussed.</li><li>• An online survey is being prepared, with the reference group providing feedback on the original draft.</li><li>• In response to community feedback from the first reference group meeting, the Town is reconsidering the timeline for this project to allow for additional time for community consultation.</li></ul>





# Corporate Business Plan Projects

Measures of our Success 2017/18

Strategic Priority 1. Social

**OBJECTIVE: 1.2 ENSURE ALL COMMUNITY MEMBERS HAVE THE OPPORTUNITY TO BE ACTIVE, SOCIALISE AND BE CONNECTED.**

Projects	
Nature-based Playground Facilities at Sandy Beach and Mary Cres Reserve	<ul style="list-style-type: none"><li>• Nature Play Solutions has finalised the concept plan, images and video fly-through will form part of the online consultation process facilitated through Your Say Bassendean.</li><li>• The Town is in receipt of a draft flood impact assessment and waiting on feedback/approval from Department of Water.</li><li>• Community consultation will be conducted once the flood impact assessment has been finalized with appropriate approvals.</li><li>• Carter Giorgi Real Estate have been appointed to market the sale of land by tender process of 48 Chapman Street and 93 Lord Street.</li><li>• The Mary Crescent Reserve Playground concept design has been finalised. Officers are currently developing the tender documents from the contractors' detailed plans. The Minister for Planning has approved the use of Cash In Lieu (CIL) funding for the project.</li></ul>



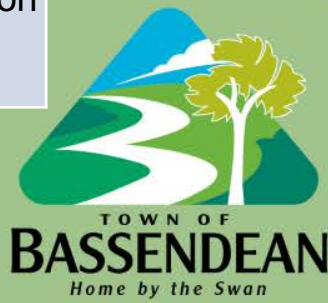
# Corporate Business Plan Projects

Measures of our Success 2017/18

**Strategic Priority 1. Social**

**OBJECTIVE: 1.2 ENSURE ALL COMMUNITY MEMBERS HAVE THE OPPORTUNITY TO BE ACTIVE, SOCIALISE AND BE CONNECTED.**

Projects	
Plan and build Men's Shed facility	A development application for the proposed construction of the Bassendean Men's Shed at the Council Depot was approved by the Town on 3 October 2017. Officers are now in the process of obtaining additional quotes (bill of quantities) from suitable builders to embellish an application already lodged with Lotterywest for grant funding.
Develop a new Reconciliation Action Plan	Council endorsed the newly drafted Reconciliation Action Plan at the Ordinary Council Meeting on 26 September 2017. The Reconciliation Action Plan was forwarded to Reconciliation Australia for their feedback and approval. Reconciliation Australia has provided feedback on the original draft mainly around terminology used and being consistent with the Reconciliation Action Plan template. The Reconciliation Action Plan will be tabled at a future Council meeting for adoption.



# Corporate Business Plan Projects

Measures of our Success 2017/18

Strategic Priority 1. Social

OBJECTIVE: 1.3 PLAN FOR A HEALTHY AND SAFE COMMUNITY

Projects	
Increase Volunteer participation	<p>The Volunteer Centre continues to provide opportunities for community participation through volunteering</p> <p>NAIDOC Family Day - 2 volunteers as Community Transport drivers and 7 volunteers in event management.</p> <p>Art Awards - 33 shifts were covered by volunteers. 6 volunteers assisted with set up of venue and operational aspects of the exhibition.</p> <p>Volunteer Centre engaged 6 volunteers who supported referral service and community groups additionally a placement student from Mount Lawley high school attended for one week to gain community experience.</p> <p>Verge Transformation Project was assisted to become a formalised group by working in collaboration with Community Gardens.</p> <p>Historical society was assisted to recruit volunteers for pensioner guard cottage.</p> <p>Community Transport volunteers continued to deliver a service for members of the community.</p>



# Corporate Business Plan Projects

Measures of our Success 2017/18

Strategic Priority 1. Social

OBJECTIVE: 1.4 IMPROVE LIFESTYLE CHOICES FOR THE AGED, FAMILIES AND YOUTH

Projects	
Review Service delivery models for seniors including community care and Hyde Retirement Village.	Review Service delivery model will be undertaken by the Director Community Development upon return from long service leave.
Review and implement Youth Plan	Youth Services will be undertaking a review and is scheduled to be completed within 2017/18.



TOWN OF  
**BASSENDEAN**  
*Home by the Swan*

# Corporate Business Plan Projects

Measures of our Success 2017/18

Strategic Priority 4. Economic

OBJECTIVE 4.1 - BUILD ECONOMIC CAPACITY

Projects	
Develop new Economic and Commercial Activity Strategy including	In collaboration with Strategic Planning a consultant has been appointed to compile a Local Economic Overview for the Town. This profile will include compilation of a community profile, local economic profile, commercial floor space needs analysis, and local housing market profile.
Retail Needs Assessment (part of Local Planning Strategy Review) during this financial year	Retail needs assessment is included within the commercial floor space needs analysis.



# Corporate Business Plan Projects

Measures of our Success 2017/18

Strategic Priority 4. Economic

OBJECTIVE 4.1 - BUILD ECONOMIC CAPACITY

## Projects

Establish baseline data for the achievement of nominal targets during this financial year

Re-established access to the Australian Business Register (ABR) for intelligence data on local business activity. Data base has in excess of 3000 registered businesses and includes comprehensive insight into the local economy.



TOWN OF  
**BASSENDEAN**  
*Home by the Swan*

# Corporate Business Plan Projects

Measures of our Success 2017/18

Strategic Priority 4. Economic

OBJECTIVE 4.2 - FACILITATE LOCAL BUSINESS RETENTION AND GROWTH

Projects	
<ul style="list-style-type: none"><li>• Establish local business group of operators within the Town</li><li>• Review &amp; refresh Bassendean Means Business Brand</li><li>• Produce a survey for local business, to gauge their understanding and recognition of Bassendean Means Business brand</li></ul>	<p>Currently finalising digital marketing strategy with investigation of local business group. The digital marketing strategy aim is to promote the Town of Bassendean as a business friendly location, i.e. understanding businesses, planning local laws etc.</p> <p>Brand review being conducted as part of developing the digital marketing strategy.</p>

