

WHAT IS SWITCH YOUR THINKING?

switch
your thinking

home our projects what's on ways to switch blog get involved about us

CHANGE MAKERS
CLIMATE SCIENCE AND ADAPTATION

Change makers: Climate science and adaptation
A free workshop series to help you thrive in Perth's changing climate.
#ScienceWeek

find out more

ways to switch
find out more

upcoming events
browse our events

get involved
find out more

national science week 2018
A free workshop series to help you thrive in Perth's changing climate
[find out more about our events](#)



Switch your Thinking .mp4

switch
your thinking

SWITCHED ON SCHOOLS



YOUNG RE-INVENTOR OF THE YEAR



SUPPORT FOR SCHOOLS



- Climate Clever discount
- Sustainable School Alliance
- South East Sustainable Schools Network Meetings
- Connect schools to Council resources
- Switched on Business discounts
- Educators e-newsletter

SWITCHED ON BUSINESS

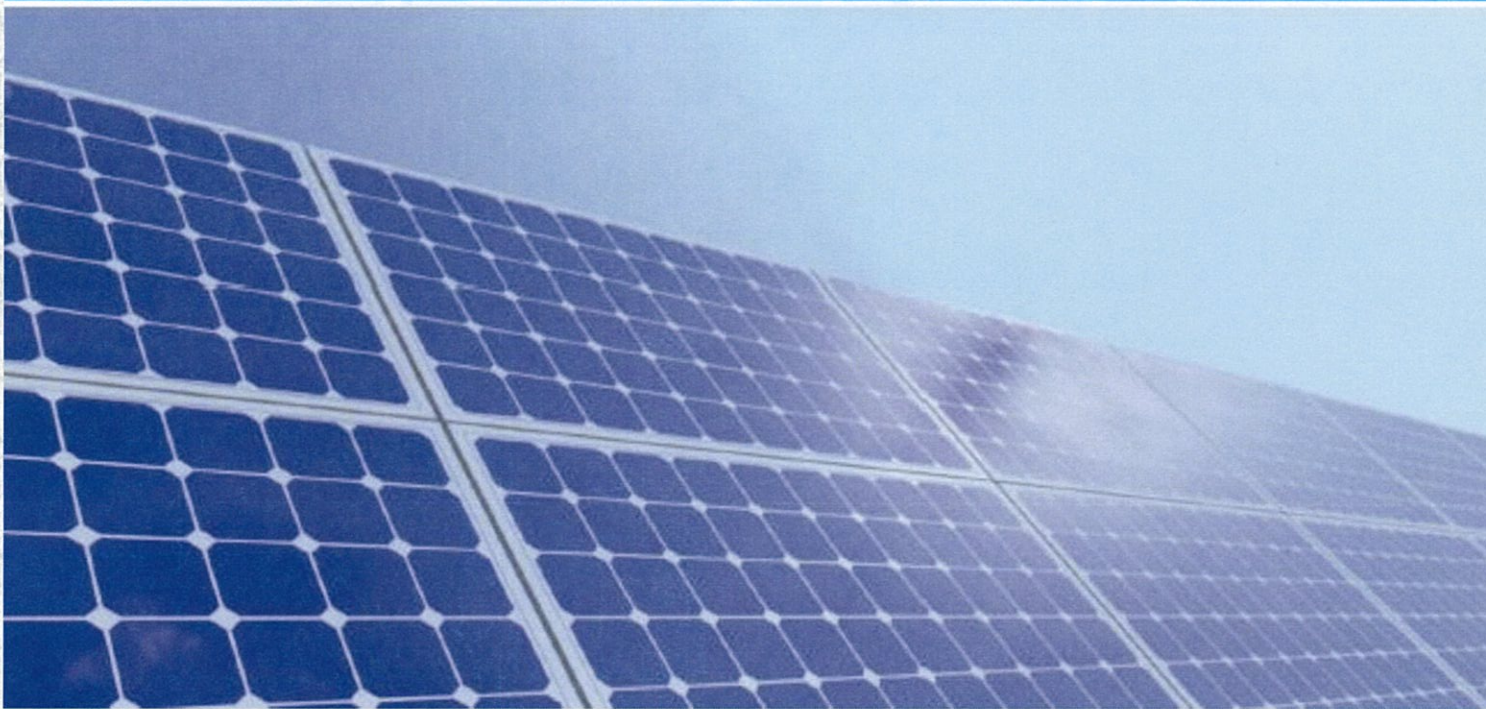


switch
your thinking

LAST STRAW



Rewards for Business



COMMUNICATIONS

switch
your thinking



Search

Join our mailing list

[home](#) [our projects](#) [what's on](#) [ways to switch](#) [blog](#) [get involved](#) [about us](#)

Change makers: Climate science and adaptation

A free workshop series to help you thrive in Perth's changing climate.
#ScienceWeek

[find out more](#)

ways to switch
[find out more](#)

upcoming events
[browse our events](#)

get involved
[find out more](#)

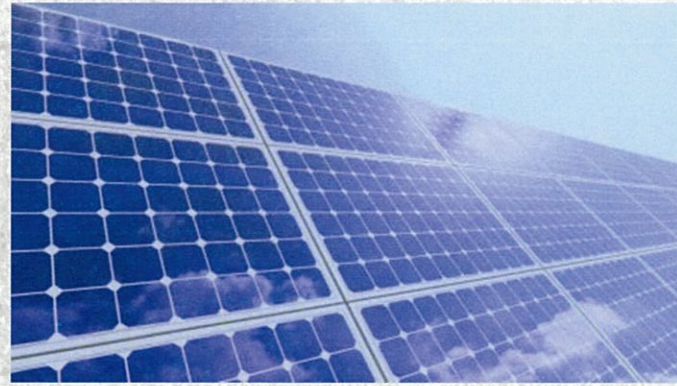
national science week 2018

A free workshop series to help you thrive in Perth's changing climate

[find out more about our events](#)

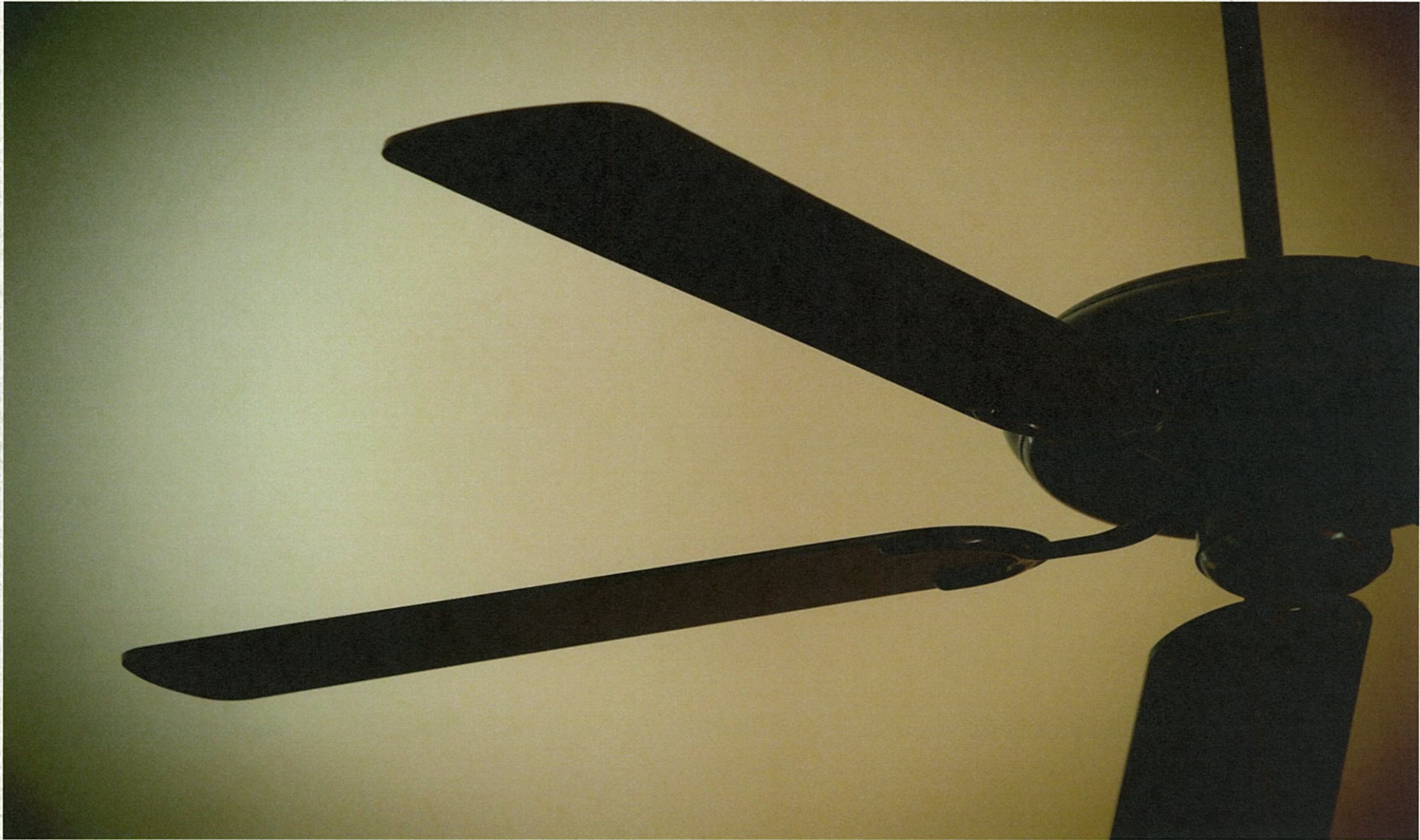
switch
your thinking

Rewards for Residents

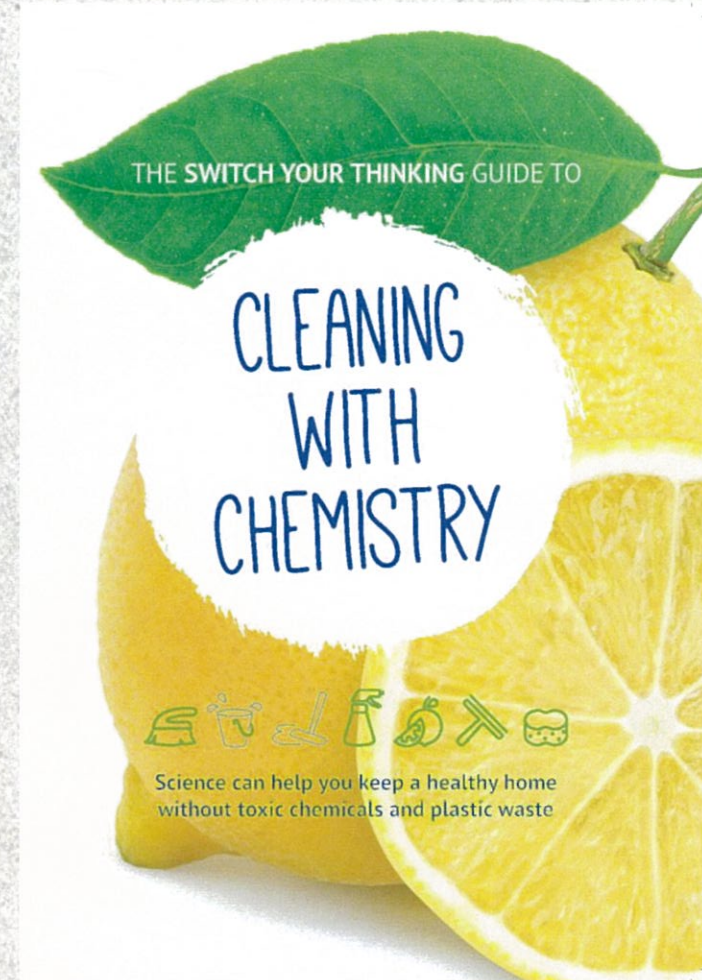
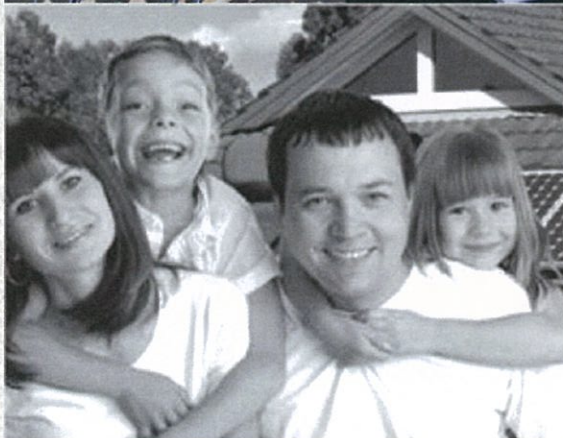


switch
your thinking

ENERGYSMART TIPS



WORKSHOPS



switch
your thinking

NATIONAL SCIENCE WEEK



Biophilic
Cities
Perth

switch
your thinking

SWITCH OFF PLASTICS



SMART CITIES



COUNCIL BENEFITS



Staff e-news
Knowledge sharing & networking

THANK YOU



switch
your thinking!



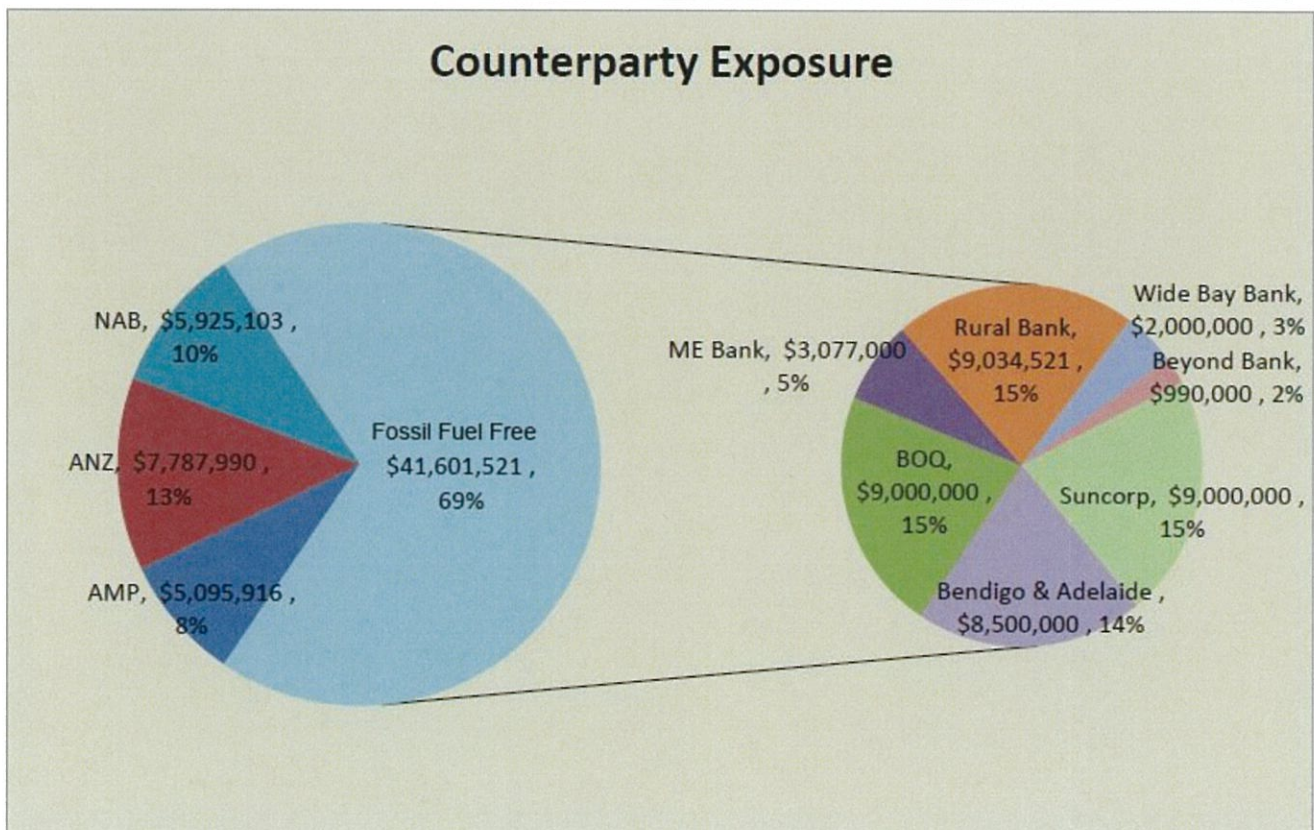
Council Divestment from Fossil Fuels

The following are provided as examples to illustrate how councils can divest from financial institutions that fund fossil fuel projects and still meet the requirements of risk diversification, credit rating and rate of return.

City of Fremantle

The City of Fremantle adopted a divestment policy in August 2014

- Currently in the process of divesting
- **69%** of funds invested in fossil fuel free institutions (as of November 2015)
 - Bank of Queensland (15%)
 - Suncorp (15%)
 - Bendigo & Adelaide (14%)
 - Rural Bank (15%)
 - ME Bank (5%)
 - Wide Bay Bank (3%)
 - Beyond Bank (2%)



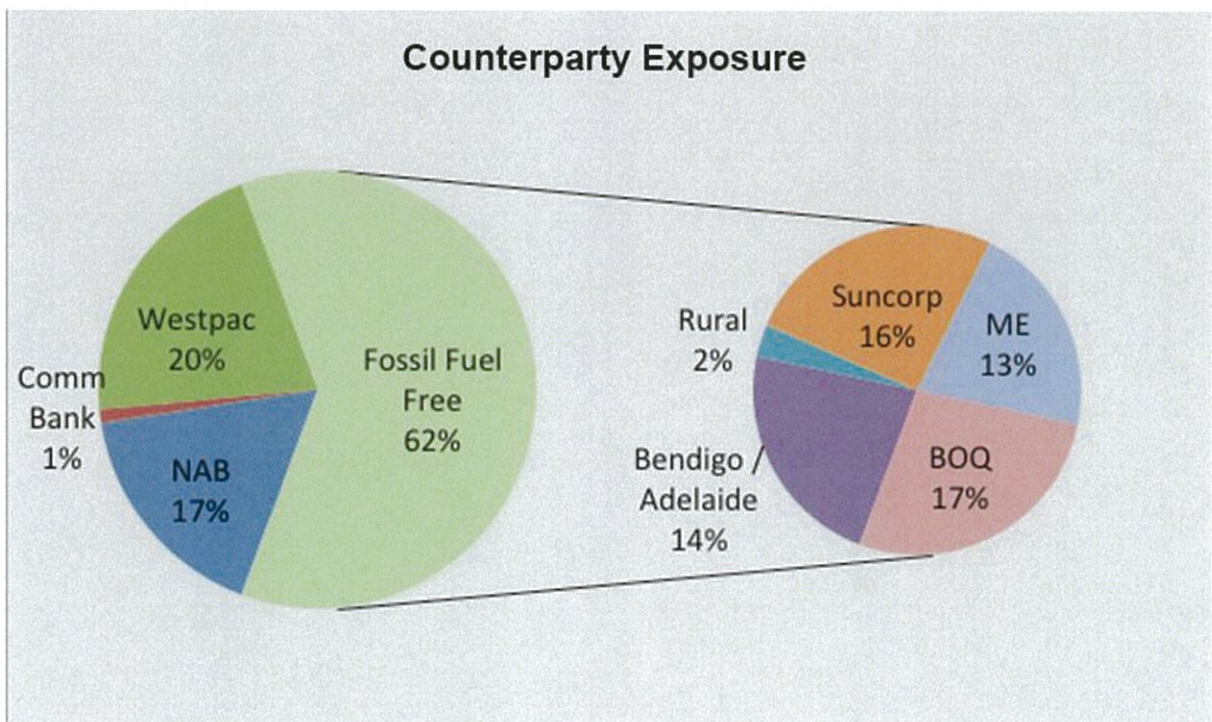
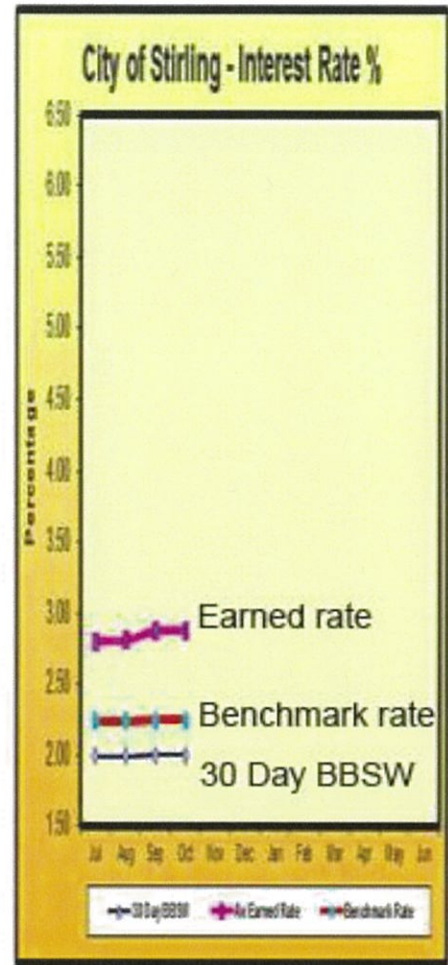
City of Stirling

The City of Stirling has NOT yet adopted a divestment policy

However, the City's Manager of Finance (Ingrid Hawkins) actively searches for investments with the best rate & as a result consistently achieves well above the benchmark rate of return.

This approach has resulted in **62%** of funds being invested in fossil fuel free institutions

- Bank of Queensland (17%)
- Bendigo / Adelaide (14%)
- Suncorp (16%)
- ME (13%)
- Rural (2%)



Town of Bassendean

At present the Town has almost \$11 million (70%) of investments in fossil fuel aligned institutions (period ending 30 November 2015)

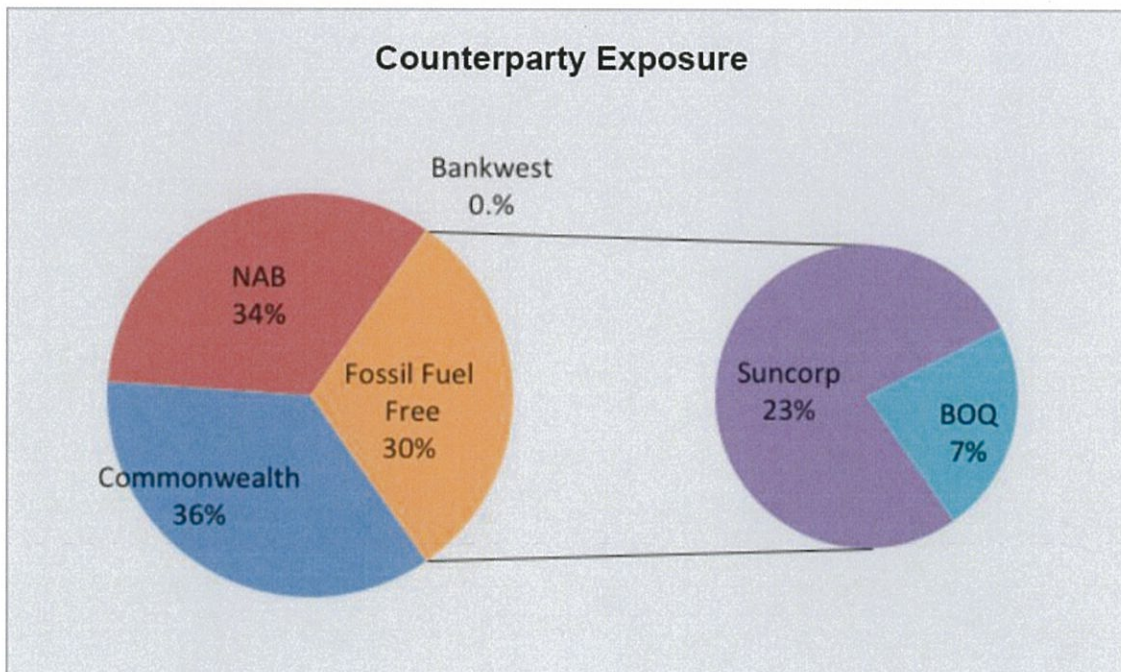
Commonwealth Bank*:	\$ 5,610,210
National Aust. Bank*:	\$ 5,265,291
Bankwest*:	\$ 11,135
Bank of Queensland:	\$ 1,090,376
Suncorp:	\$ 3,690,796

Total:	\$ 15,667,807
Total (Fossil Fuels):	\$ 10,886,636

** indicates institutions that fund fossil fuel projects*

Town of Bassendean

Monthly Investment Report (Period Ending 30 November 2015)



Within the parameters of the **current** investment policy, by giving deliberate preference for investment with financial institutions that do not invest in or finance the fossil fuel industry there is the potential for 90% divestment from fossil fuels:

- Rabobank (AA- Fitch Rating)
- Suncorp (A+ S&P Rating)
- Bendigo Bank (A- S&P Rating)
- Bank of Queensland (A- S&P Rating)
- ME Bank (BBB+ S&P Rating)

Amended divestment motion:

"That in accordance with the Town of Bassendean Financial Sustainability Policy 6.15, that requires the Town to meet the needs of current and future generations through an integration of environmental protection, social advancement and economic prosperity (See Section 1.3 of the Local Government Act),

1. The Town of Bassendean Investment Policy 6.18 be amended to incorporate deliberative preference for investment with financial institutions that do not invest in or finance the fossil fuel industry where:

a) the investment is compliant with Council's investment policy with regards to risk diversification & credit rating;

b) the investment rate of interest is favourable to Council relative to other similar investments that may be on offer to Council at the time of investment.

2. The matter is referred to the next Audit and Risk Management Committee meeting to review the Investment Policy 6.18; and

3. Council requests that the monthly financial statement and reports include the state of its divestment from fossil fuels."

Please join us to hear some tips and tricks about how you can save your school money and reduce your carbon footprint!

As seen on ABC ME TV series 'Project Planet'!
WATCH HERE!



DATE

Monday 10th September

WHEN

4pm–5.30pm

doors open 3.30pm for a 4pm start



WHERE

Coastal Environment Centre, Entrance Pelican Path, Lake Park Rd, North Narrabeen NSW

PLEASE RSVP HERE

bit.ly/2LdYvtP

Light refreshments provided

WHAT'S IT ALL ABOUT

The ClimateClever Initiative helps increase the efficiency and sustainability of school buildings, while providing teaching tools to educate and up-skill the next generation on resource efficiency and low carbon living.



Measure

Our online **Carbon Calculator** helps schools calculate their carbon emissions, providing benchmarks and baselines to allow the school to track emissions and costs annually and compare results with other schools.



Audit

Our online **Building Audit Tool** allows students to record and understand how their school buildings and facilities consume resources and impact their overall carbon footprint. This can be tracked annually and assets can be compared with other schools.



Action

The personalised online **Climate Action Plan** provides advice on how to systematically reduce schools' carbon footprint. It enables schools to assign tasks and actions, set deadlines, track monitor progress and share experiences.

For more information, see climateclever.org

See our Fact Sheet [here](#)

Questions? Contact vanessa@climateclever.org or 0422 865 776